

connect.z combines two control technologies in one system



ZigBee is far and away the most widely used standard in the smart home world.

- 
- › Mesh network
  - › Direct connection with Amazon Echo and Google Home
  - › Compatible with products from different manufacturers
  - › High level of security
  - › Easy setup
  - › Energy efficient

# connect.2



Bluetooth is an established standard in the digital world.

---

## ADVANTAGES:

- › Local & secure network
- › Protocol is mainly audio (low debit)
- › Mesh network: Elements are receivers and senders
- › Easy setup
- › Usable offline
- › Energy efficient



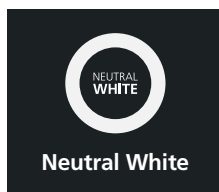
# Light up your world!



connect.z offers a wide range of lamps and lighting equipment. Select products from the following options according to your needs:



**Warm White**



**Neutral White**



Individual light from 50,000 white tones.

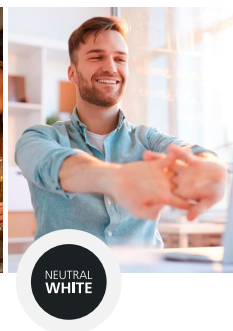
**Tunable White**



Diverse lighting selection from 50,000 white tones and 16 million colours.



Enjoy relaxing moments!



Stay focused & efficient!



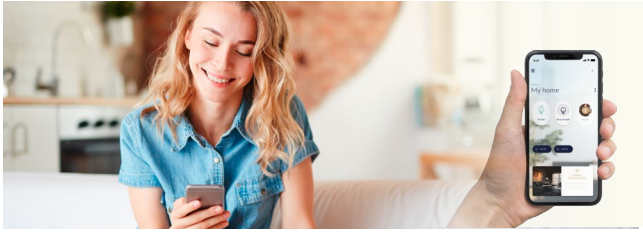
Start the day fresh every morning!



Create the perfect atmosphere!

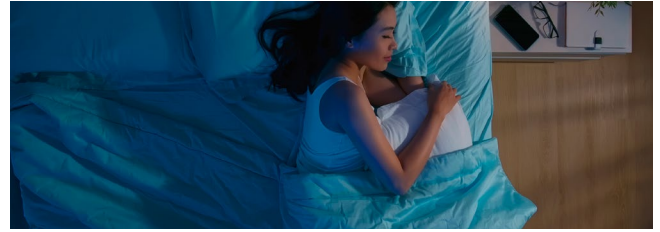


## Enjoy many useful convenience features::



### TIMERS AND CALENDARS

Make your daily life easier with timers and calendars. Wake up relaxed with the simulated sunrise.



### LIGHT ALARM CLOCK

You'd rather not start your day in a bad mood? Wake up relaxed with the simulated sunrise.



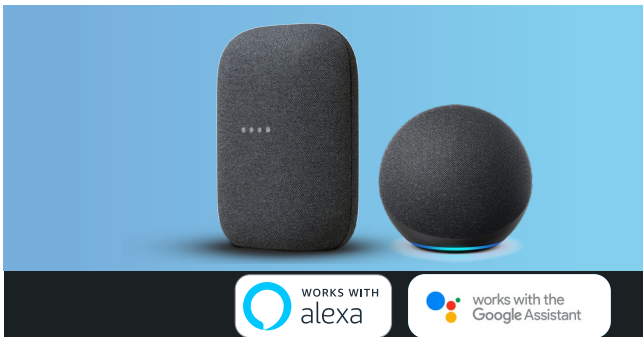
### DISCO FUNCTION/MODE

For the perfect party mood, the disco function synchronises the light



### PRESENCE SIMULATOR

Protect your home with the convenient presence simulator. Variable time intervals allow the system to turn the lights on and off to simulate your presence at home and deter unwanted guests.



### VOICE COMMANDS

More convenient! Turn the light on whenever you want with only a voice command.

## Control options



Set your smart home as you prefer! With the app, voice commands, or remote control.



### APP CONTROL

Use the free app for smartphone, tablet, or smartwatch.



### VOICE COMMANDS

Use intelligent voice assistants such as Google Home and Amazon Alexa.



### REMOTE CONTROL

Use the practical remote connect.z operation at any time.



### CONNECT.Z ACCESSORIES

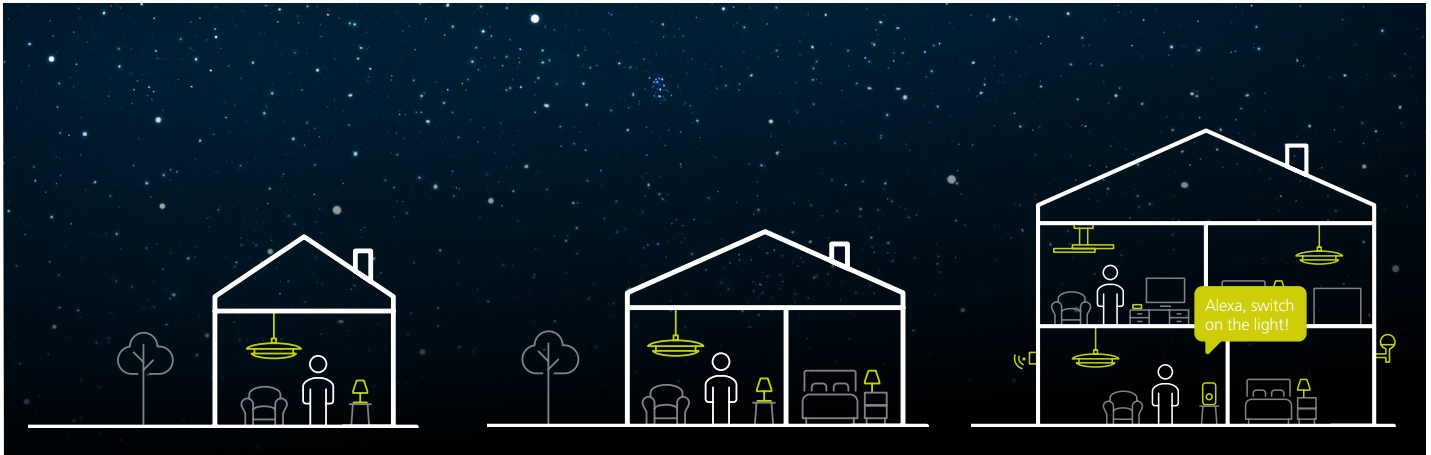
Use clever accessories such as the movement sensor and much more.



### DIMMER FUNCTION

Use the practical dimmer function via app, speech command or remote control.

# One system, many possibilities!



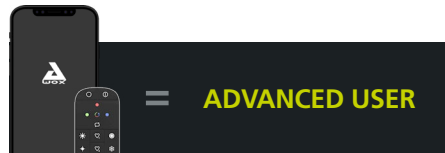
No matter how you start, you can integrate new products into your connect.z system at any time and gradually expand your smart home.



All you need to start is a connect.z product and the remote control. No internet connection is required and you have access to:

#### Standard functions:

- › Select colour
- › Change colour
- › Dim
- › Favourites (2x)
- › Groups (3x)
- › Candle mode



Besides the standard functions, would you also like access to the practical convenience features? Then you need only your smartphone or tablet and the Awox app. This app allows you to control your lights via WIFI and Bluetooth®.

#### Standard functions + convenience features/

- › Light alarm clock/
- › Presence simulation
- › Disco function
- › Timers & timetables
- › Accessories can be incorporated



Use the system's full potential and control your smart home through the Awox app using WIFI or Bluetooth® as well as integrating a voice assistant into the system. This gives you:

#### Standard functions + convenience features + voice commands\*

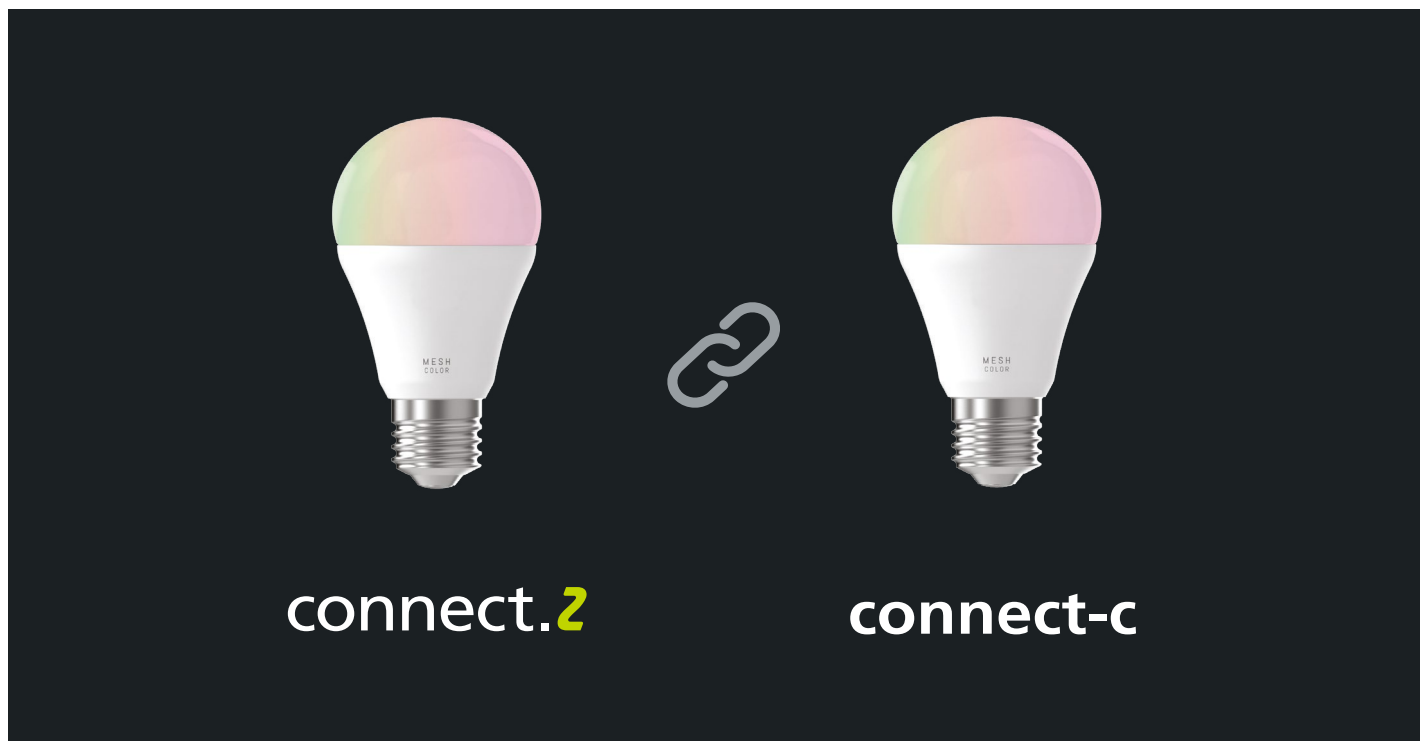
- › Amazon Alexa or Google Home

\* Use a voice assistant with integrated bridge.



## YOU ALREADY HAVE CONNECT-C LUMINAIRES FROM THE PREVIOUS SYSTEM! WHAT NOW?

No problem! The previous connect-c products are compatible with the new connect.z system.



### EGLO connect-c - connect.z

The existing EGLO connect-c system is compatible with the new EGLO connect.z system. You don't need to switch from the existing Bluetooth low energy system to the new open protocol ZigBee 3.0. Lights from EGLO connect-c can be incorporated into the existing EGLO connect.z system.